

Garden Fleet

Garden Fleet stops ocean-bound plastic before it enters the sea and transforms it into **Eco-Bricks that support local communities.**

- Operating in Palawan Philippines
- Community Powered Plastic Recovery
- Transparent, verifiable impact through Project Health Control (PHC)[™]
- Provides work opportunities to Indigenous tribal communities
- Provides Anti-Pollution Education with partner Through The Golden Door



The Problem

Coastal communities collect plastic, but without processing equipment, it piles up, leaks into waterways, or gets burned.

- MRFs are full and lack mechanical processing
- Plastic sits for months → becomes microplastics/nanoplastics
- Communities are forced to burn, bury, or dump
- Cleanups alone don't solve the crisis

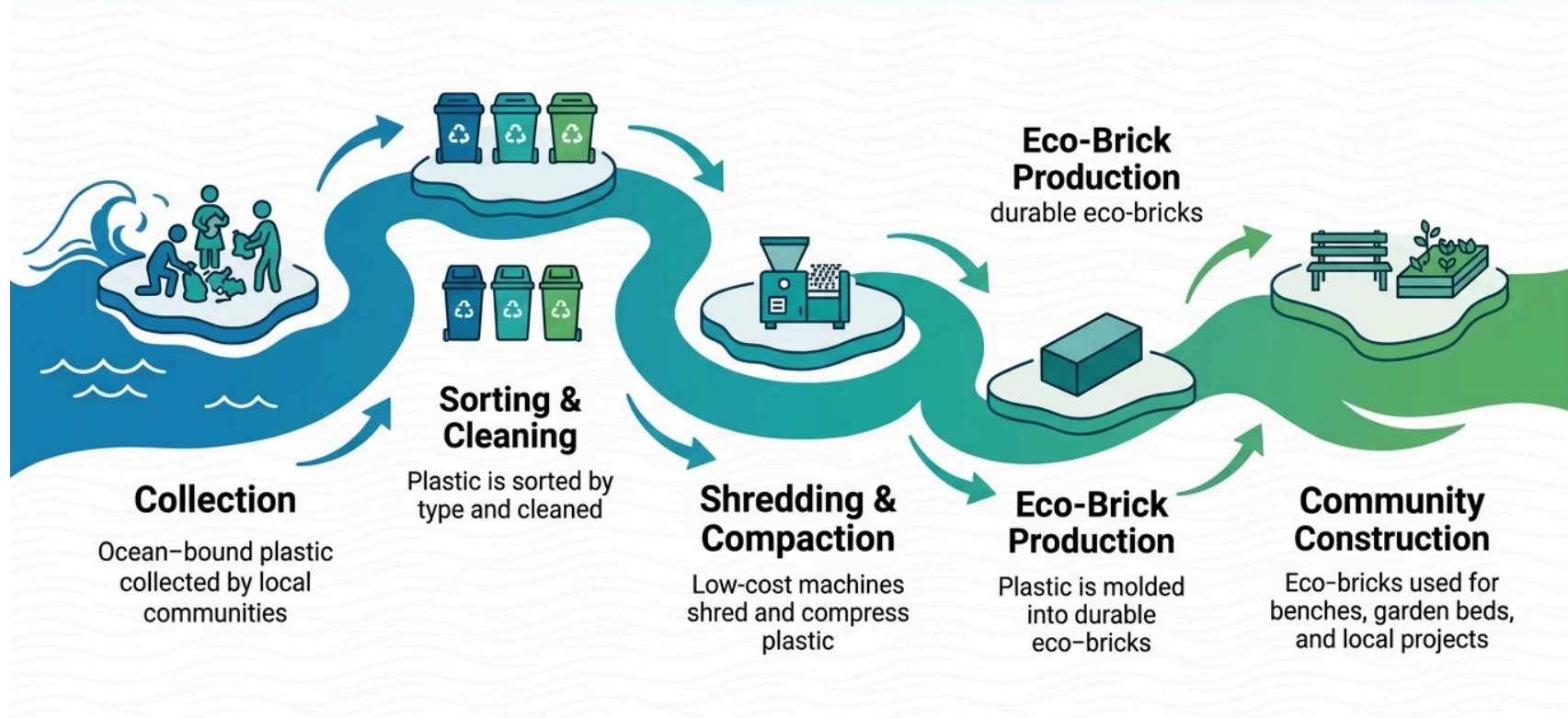
i MRFs (Material Recovery Facilities) are where collected plastic waste is brought for sorting and processing, but without a mechanical processing system, plastic often sits in massive piles for months or even years. There are hundreds of MRFs in Palawan that are full to maximum capacity.



Our Model

A simple, scalable system: collect → sort → shred → compress → Eco-Bricks.

How Garden Fleet Transforms Plastic Waste Into Eco-Bricks



Traction

- We've successfully completed **multiple shoreline cleanup missions** in Palawan
- Worked directly with **Indigenous communities** on collection and sorting
- Established **operational workflows** for collection → sorting → Eco-Brick preparation
- Built a **local volunteer and community network** ready for scale
- Demonstrated **proof of concept** for Eco-Brick production using low-cost methods
- Developed **partnership foundations** with local leaders, barangays and LGUs
- Implemented **Project Health Control™** to ensure future operations are fully tracked

Our early missions proved the model works. Now we're ready to scale with proper equipment and real-time tracking.



What We Need

We are raising funds to acquire the processing equipment that turns effort into measurable, certifiable impact.

- Heavy Duty Plastic Crushing Machine Waste Rubber Shredder
- Plastic Melting Machine
- Plastic Parallelization Machine
- Plastic Waste Composite Brick Hydraulic Press
- Mechanized pallet moving equipment
- Field Transport Trucks + Trailers
- Operational Costs for 2 years of operations
- Anti-Pollution Educational Materials/Classes

This equipment is the bottleneck preventing us from turning community effort into year-round, scalable impact.

Total Funding Needed for 2-years: \$400,000



What This Unlocks

Your support transforms Garden Fleet from seasonal cleanups into year-round impact.

- Higher-value outputs (sorted, shredded, baled plastics)
- Increased Eco-Brick production
- Sustainable operational funding
- Cleaner coastlines
- Local jobs
- A replicable model for island communities

This is the moment where equipment = exponential impact.



Transparency

Every donation, purchase, and impact metric is tracked in real time through Project Health Control™.

- Full financial visibility
- Proof of spending
- Independent audit capability
- Real-time impact dashboards

Your support is traceable from dollar → equipment → output → impact.

What Angels Receive



Impact Reports

See exactly what your support made possible.



Plastic Removed

Track how many kilograms of waste your donation helped remove.



Eco-Bricks Created

See how much plastic was processed into Eco-Bricks.

Your support creates measurable, verified impact for our oceans and communities.

Our Team



Abu-Bakr Harakat
Founder & Executive Officer



Tahira Amir Khan
Partnership & Grants Manager



David Winter
Project Manager



Braiden Hermosura
Operations Manager



Petros Leivadaros Ph.D
Science Operations Manager

Consider us for your Angel Investment

Nobody wants microplastics in their food and water, yet that's exactly where this crisis is causing. Cleanups alone aren't enough. Without real support for what happens *after* the waste is collected, communities are left with the same impossible choices: burn it, bury it, or create new dumping pits like the infamous Smokey Mountain of Manila.

Garden Fleet exists to close this gap. We're building a scalable, community-powered model that coastal communities can adopt. Creating a real pathway toward lasting progress in the fight against plastic pollution and anti-pollution education to change the outlook of future generations on environmental stewardship.

Browse Online

Visit us at <https://garden-fleet.com/>

Send a Message

Email us at esg@garden-fleet.com

Speak With Us

Call +1 702 706 6134