

Garden Fleet (GF): Regenerative Coastal Restoration & ESG Impact

Empowering Angel Investors & Family Offices to
Drive Measurable Environmental and Social
Returns

www.garden-fleet.com



The Global Challenge

Our oceans and coastlines face severe threats from mismanaged waste and erosion:

400M+

Tonnes

Plastic waste produces annually
worldwide

80%

Ocean Plastic

Originates from coastlines

~24%

of the world's sandy
beaches are eroding

100s

Communities Threatened
by island erosion



In the Philippines...

2.7 M

Metric Tons

of plastic is entering Philippine waters annually

#3

Global Ranking

Philippines is considered the third country for ocean plastic waste globally according to the World Bank

<10%

of all global plastic has ever been recycled



The challenge of coastal erosion

The Philippines faces significant coastal erosion, particularly in its island communities, with measurable impacts on human settlements and biodiversity loss...



the Philippine Sea are rising at a rate of 5 to 7 mm/year, faster than the global average, contributing to increased erosion risks



Beach erosion endangers 24% of sandy beaches, imperiling habitats for marine species like turtles and birds.

The Garden Fleet Solution



Ocean Cleanup

Operational ocean cleanup using low-cost fleets of ships to gather plastic waste from coastlines



Tree Planting & Reforestation

Planting mangrove trees along vulnerable coastal areas to help prevent beach erosion



Sustainable Funding Model

Regenerative Finance (ReFi) token model to sustain continuous operations and track impact

Garden Fleet Operational Model



Low-Cost Fleet Operations

Deploy specialized vessels to remove plastic waste directly from beaches and waterways.



Local Workforce & Community Engagement

Empower local teams, providing meaningful jobs and fostering environmental stewardship.



Recycling & Upcycling

Sort and transform collected plastic waste into usable building materials in partnership with CubeSpawn, reducing landfill dependency.

Mangrove Reforestation



Natural Barrier Creation

Plant mangroves to stabilize shorelines and protect coastal communities from beach erosion



Ecosystem Restoration

Enhance biodiversity by creating habitats for marine and coastal species



Carbon Sequestration

Each tree planted helps offset carbon footprints, boosting ESG metrics for investors and corporate partners



Mangroves sequester an estimated 22.8 to 25.5 million metric tons of carbon annually, playing a crucial role in global carbon management

Blockchain Tracking & ESG Verification

Absolute Transparency

Our transparent system validates environmental impact through blockchain technology

On-Chain Proof of Impact

Every ton of plastic removed and every mangrove planted is logged on a transparent, tamper-proof ledger (CELO blockchain)

NFT Certificates

Ocean Guardian (for plastic removal) and Mangrove Guardian (for reforestation), providing verifiable ESG claims for stakeholders



Why do we provide ESG boosting services ?

ESG is a Driver of Sustainable Returns



Regulatory Compliance

Many companies face new regulations and investor pressures to show tangible environmental impact.



Direct Impact Services

Garden Fleet sells direct cleanup and reforestation services providing measurable environmental benefits.



Verifiable ESG Benefits

Our solutions help clients fulfill compliance requirements and enhance brand reputation with *verifiable* impact.



Stable Revenue Stream Through Service Contracts

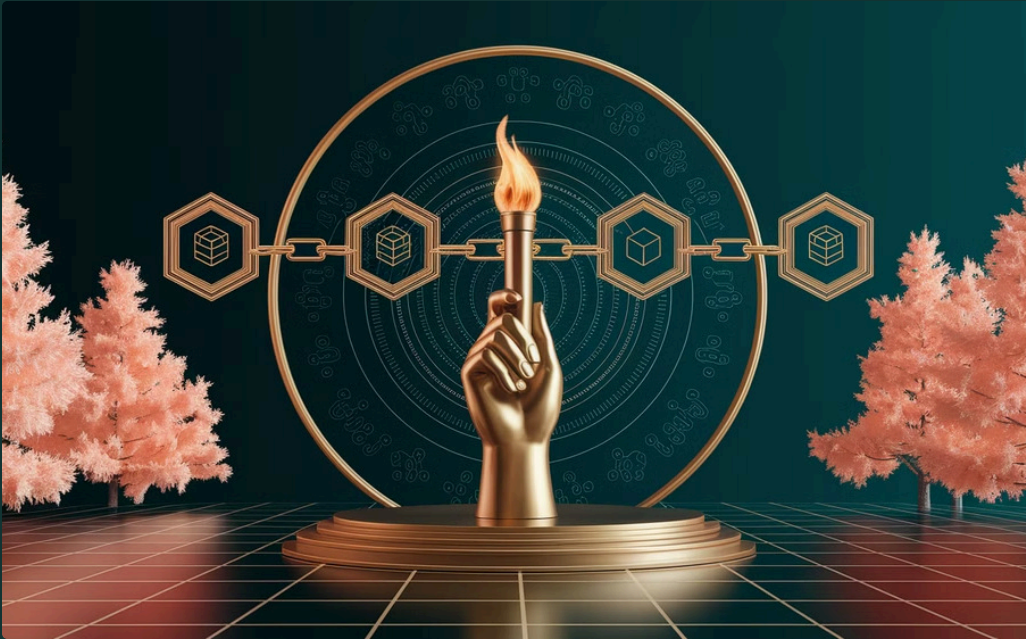
ESG as a Service

The fleet secures *recurring contracts* with corporate, government, and hospitality clients through annual plastic-removal quotas and reforestation targets.

Sustainable Cash Flow

These paid partnerships drive sustainable cash flow, supporting continued expansion and higher returns for investors.

Our transparent approach builds confidence across your stakeholder ecosystem



Blockchain Transparency

Transparent, blockchain-tracked impact fosters trust among consumers, shareholders, and regulators.



Demonstrable Impact

Companies that engage *Garden Fleet* can publicly demonstrate *real & measurable* contributions

Recycling & Upcycling

Only around 9% of the world's plastic waste is actually recycled—leaving the remaining 91% to accumulate in landfills or leak into the environment

CubeSpawn Modular Recycling

Multi-stage sorting

Optimizing plastic quality for processing



Filtration & scrubbing

Eliminating microplastic release and airborne contaminants



Thermal treatment

Using pyrolytic chambers to break down material safely



Gasification

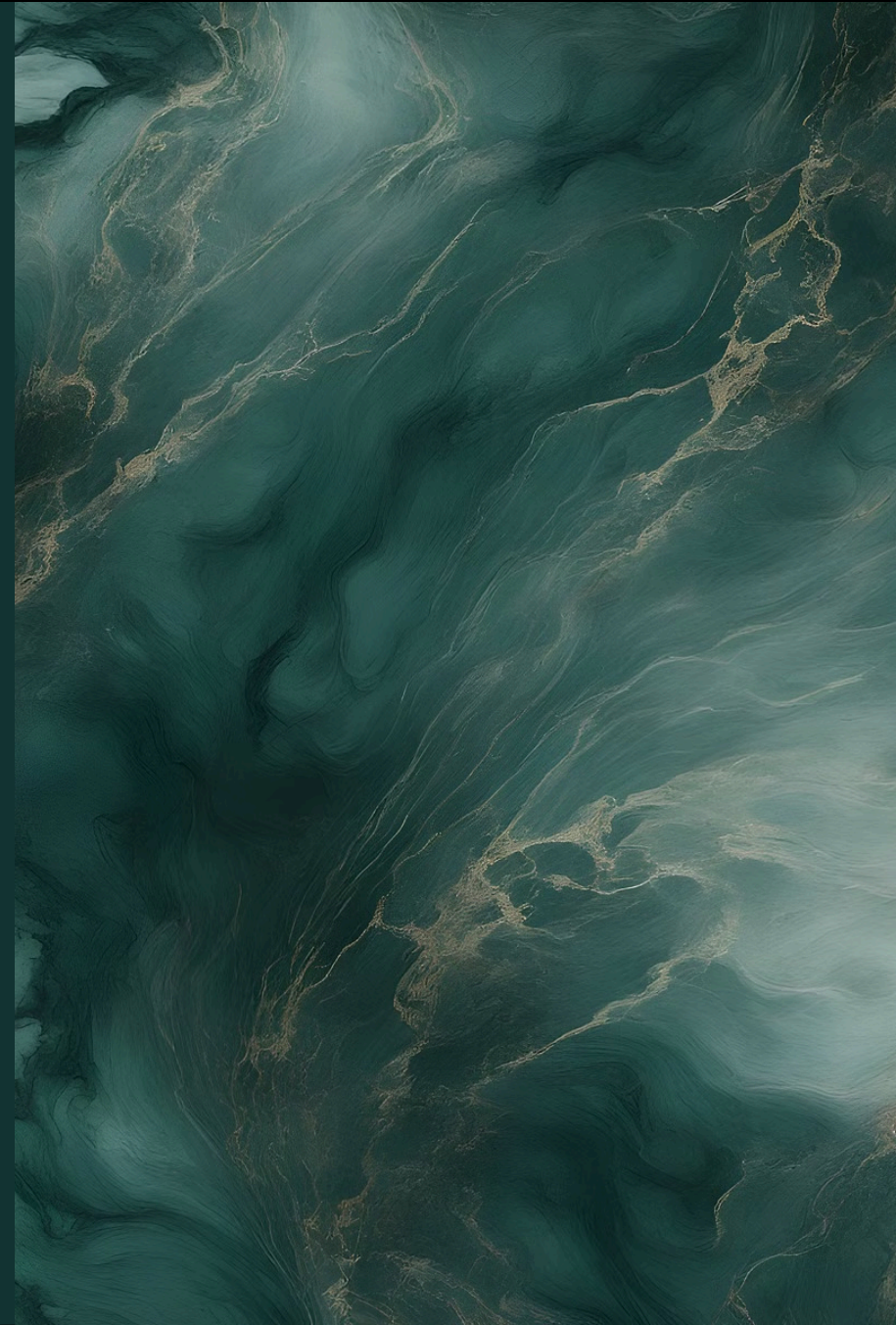
Converting waste into syngas without toxic emissions



This closed-loop system ensures maximum recovery of resources while minimizing environmental impact.

From Ocean Waste to Community Infrastructure

Materials that are not permanently incinerated are converted into **durable, low-cost building blocks**, made available **at-cost** to support sustainable infrastructure for vulnerable coastal communities.



*This closed-loop system transforms ocean waste
into community resilience*

The Strategic Partners Powering Garden Fleet

Through The Golden Door (TTGD)

Community Development & Regenerative Living



Education & Housing

Providing essential services including housing, education, and mental health support for local residents and clean-up staff



ESG Tourism

Hosting ESG investors and eco-tourists on-site to experience sustainable development firsthand



Community Engagement

Driving local participation to build long-term resilience and self-sufficiency

CubeSpawn

Recycling, Upcycling & Circular Economy



Processing Recovered Plastics

Processes recovered plastics into construction materials for sustainable building solutions



Modular Recycling Systems

Implements modular, low-emission recycling systems that minimize environmental impact

Order Efficiency (OE)

Project Management & ESG Oversight



Real-time Analytics

Deploys Project Health Control (PHC) for comprehensive real-time analytics and monitoring



ESG Alignment

Ensures ESG alignment, risk management, and complete reporting compliance



Workforce Development

Sponsors comprehensive workforce development & specialized training initiatives



Strategic Expansion

Supports expansion through cultivating new partnerships and grants

Core Team



Abu-Bakr Harakat

Founder and leader of Garden Fleet, with over a decade of experience in military operations, U.S political campaigns, and information systems. A seasoned project management specialist, driven by the purpose of reducing global pollution. Leverages AI-driven tools and the PHC methodology to deliver scalable, blockchain-verified ESG impact through coastal restoration and regenerative finance.



David Winter

An engineering veteran with 30+ years of global experience in Oil & Gas, Rail, and Infrastructure. He brings expertise in project risk analysis and assurance to ensure Garden Fleet's ESG operations are safe, efficient, and accountable. Utilizing the PHC (Project Health Control) system, he provides stakeholders with clear monetary oversight and performance tracking.

Not Just Palawan – A Global Coastal Restoration Vision

Not Just Palawan – A Global Coastal Restoration Vision

We're launching in **Palawan, Philippines**—a strategic entry point in a country ranked among the **world's top contributors to ocean plastic**.

Starting in Palawan

Beginning our operations in the strategic coast of Narra

Modular Fleet Model

A low cost sustainable, replicable and scalable model

Global Scalability

Expandable to nations with high coastal plastic pollution, creating worldwide impact in at-risk regions



Your investment helps us launch the first fleet—
and build a model ready to restore coastlines
worldwide.

Join Us — Be Part of the Solution



Amplify Your Impact

Directly support coastal cleanups and mangrove reforestation.



Transparent & Accountability-Driven

All operations tracked on-chain, ensuring complete transparency.



Secure Long-Term Value

Partner with a mission-driven enterprise offering recurring service revenue from ESG contracts.



Improve your Score

ESG reporting made seamless for your portfolio and stakeholders.

Contact Us



Email

esg@garden-fleet.com



Visit Our Website

www.garden-fleet.com

Join Garden Fleet in restoring coastlines, uplifting communities, and building a legacy of sustainable prosperity

